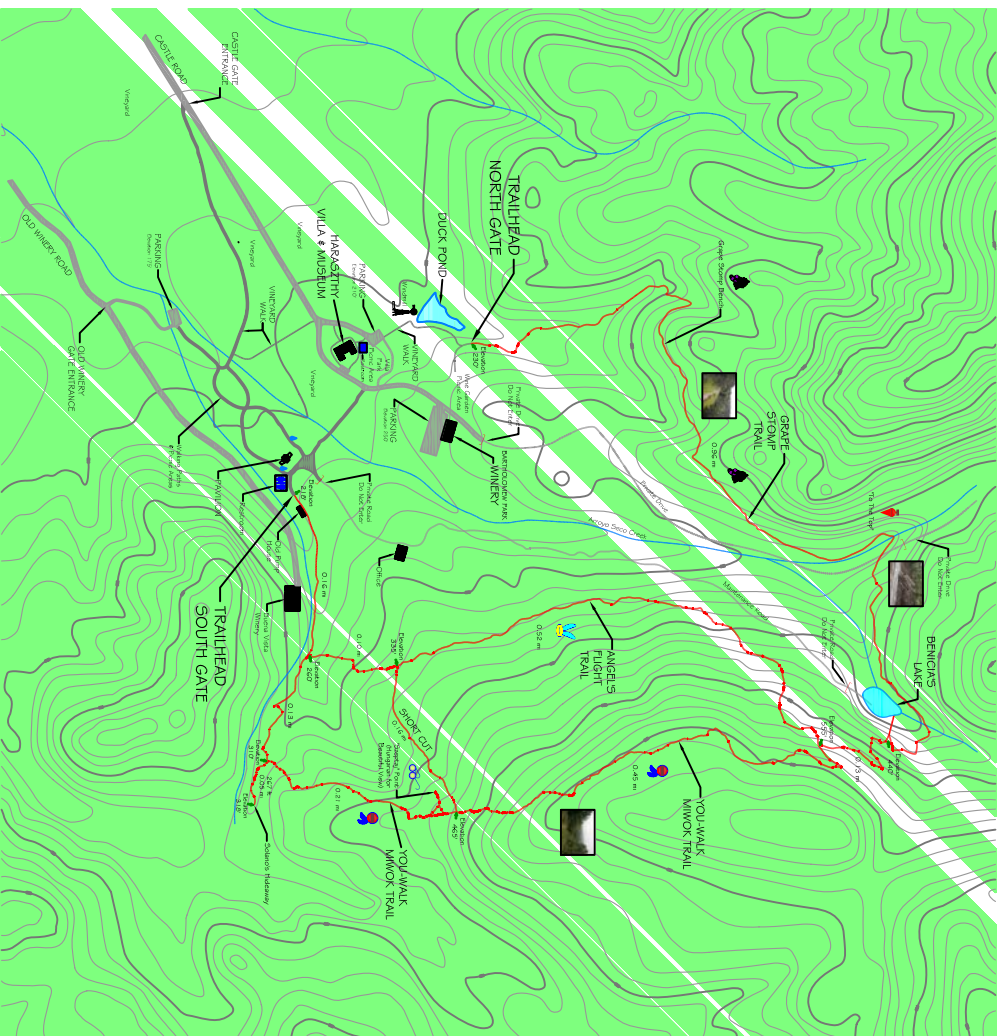


# Bartholomew Park Trail Map

Phone: (707) 938-2244



## Trail Markers



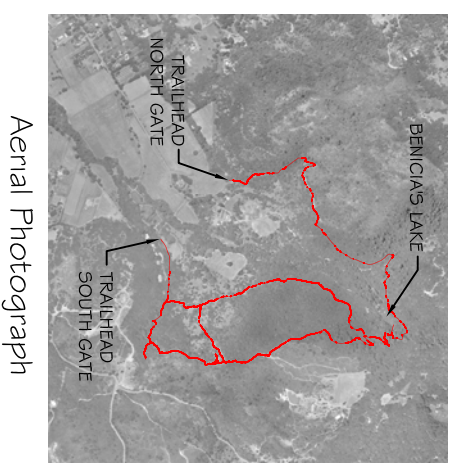
## Trail Markers

## Legend

- Vineyard Walk
- Hiking Trails:
- Grape Stomp (0.96 miles one-way)
- Angels Flight (0.72 miles one-way)
- You-Walk Mivok (1.02 miles one-way)
- Drinking Fountain
- Restrooms
- Public Roadway
- Private Roadway Please Do Not Enter
- Restrooms
- Sceptal Lookout Point
- The Top

Regular Hiking Loops	Approximate Distance	Approximate Elevation Gain	Level of Difficulty
Grape Stomp & Angels Flight	1.81 miles	330 feet	Easier
Grape Stomp & You-Walk Mivok (Outer Perimeter)	1.95 miles	400 feet	Harder

This is a private park established for the benefit of our community. Please do your part to ensure the continued availability of this valuable resource.



## Aerial Photograph



View from Grape Stomp Bench



Grape Stomp Bench



Trail



Wooded Area of the Trail



Stream along the Trail



Stumps on the Trail



Trail to Benicia's Lake



View from Benicia's Lake



View from Szeptal Point



Solaris Hideaway